



## VSS058 Low Frequency Volume Source

### Features:

- Frequency response: 50Hz~800Hz
- 200W continuous sound power output
- Up to 98dB sound pressure level (1m away)
- Internal reference microphone (can be calibrate)
- Light weight, made of aluminum alloy and ABS
- SPEAKON audio connector
- Universal excitation source, removable front cover
- Metal shield to protect speaker diaphragm
- Sturdy metal handle, M10 thread help to fix



### Application:

- Reciprocity method of noise transfer function or acoustic transfer function reciprocity test
- TPA (Transfer Path Analysis) test
- Acoustic excitation test such as sound insulation test, material absorption coefficient test, SEA (Statistical Energy Analysis) test

### Introduction

Low frequency volume source is omni sound source of volume acceleration which source diameter must be close to the wave length.

**VSS058** low frequency volume source was developed by BSWA for reciprocity method of noise transfer function or acoustic transfer function reciprocity test, TPA (Transfer Path Analysis) test and acoustic excitation test such as sound insulation test, material absorption coefficient test, SEA (Statistical Energy Analysis) test. The frequency response can cover 50Hz to 800Hz. The sound pressure level at 1 meter away is up to 98dB.

**VSS058** embedded an internal reference microphone to monitor the volume acceleration output. The reference microphone is pre-polarized microphones MPA251 which can be calibrate by CA111 sound calibrator.

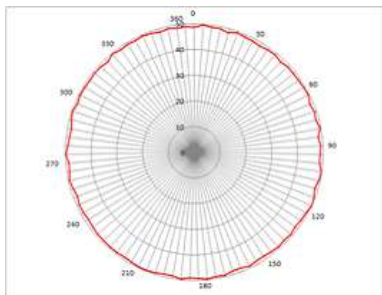
**VSS058** has a high power loudspeaker. The output power level is up to 200W continuous. The metal shield before loudspeaker can protect again the damage to diaphragm.

### Specifications

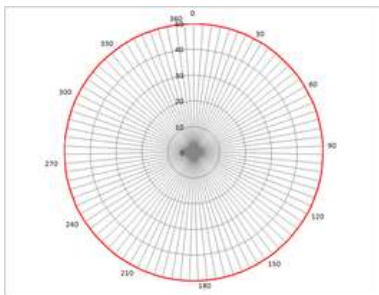
Frequency Response	50Hz~800Hz
Sound Power Output	200W (continuous)
Impedance	8Ω
Sound Pressure Level	98dB (1m away)
Reference Microphone	MPA251 (ICCP power), sensitivity: 10mV/Pa
Input Connector	SPEAKON audio connector
Sound Source Dimension (mm)	W380 x H480 x D340
Package Dimension (mm)	W600 x H650 x D450
Weight (without packing case)	15.8kg
Weight (with packing case)	31kg



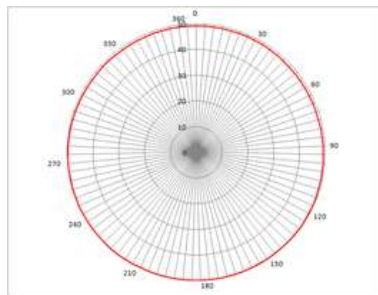
## Horizontal Directivity



50Hz

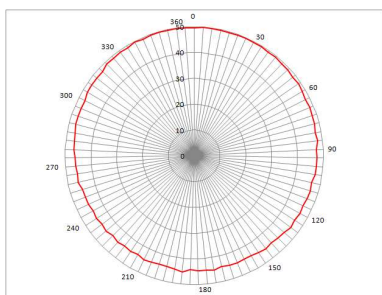


250Hz

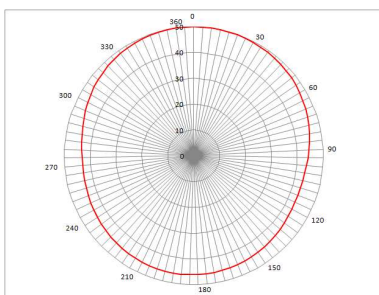


800Hz

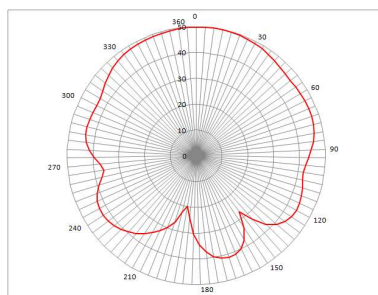
## Vertical Directivity



50Hz

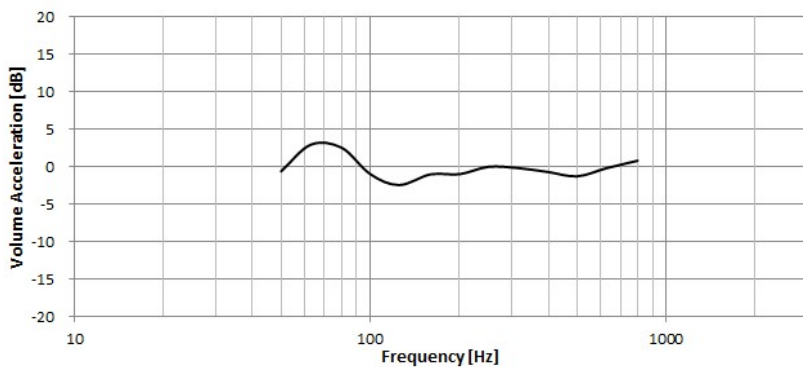


250Hz



800Hz

## Volume Acceleration Frequency Response



## BSWA Technology Co., Ltd.



Room 1003, North Ring Center, No.18 Yumin Road,  
 Xicheng District, Beijing 100029, China  
 Tel: 86-10-5128 5118  
 Fax: 86-10-8225 1626  
 E-mail: info@bswa.com.cn  
 URL: www.bswa-tech.com