

## Plane Volume Source VSS15

### FEATURES

- Frequency response: 100 Hz ~ 8,000 Hz
- Plane volume source with twelve loudspeakers
- Flat design with the height of 115mm (4.5")
- Up to 123 dB maximum sound power level
- Up to 115 dB sound pressure level at 1 meter
- Modular design
- Built-in reference microphone



### APPLICATIONS

- Sound transmission loss testing for the floor structure
- Air-borne transfer functions for the road and engine noise
- Floor trims and carpet design validation
- Floor structure noise leakage analysis

The **BSWA VSS15** is a special plane volume source with the height of 115 mm. It is ideal for the measurement of the floor trims and carpets in sound package design. It can also be used in the transfer function measurement for road noise and tire noise.

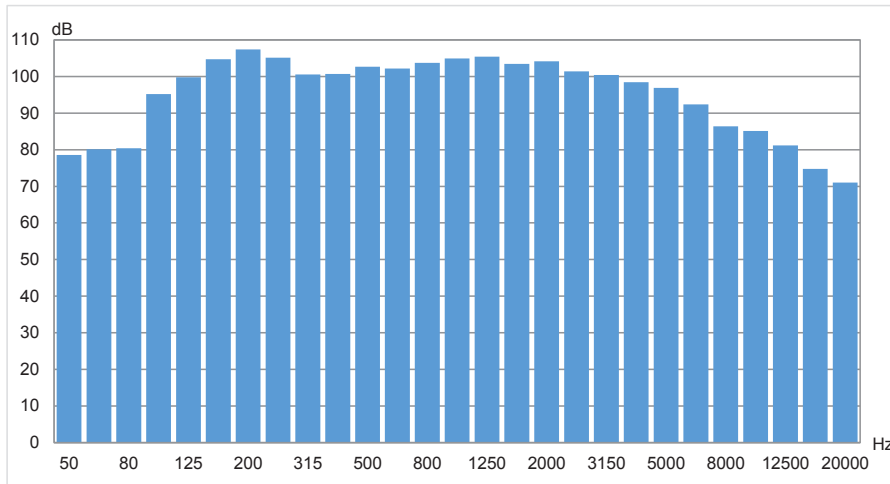
The VSS15 is made with twelve loudspeaker units with 100 Hz to 8000 Hz frequency response. The maximum output sound power level is up to 123 dB. The built-in reference microphone can self-calibrate the sound power output. When you need a larger sound source for your application, the modular design can help you to easily combine several plane volume sources into a large sound source.

### SPECIFICATIONS

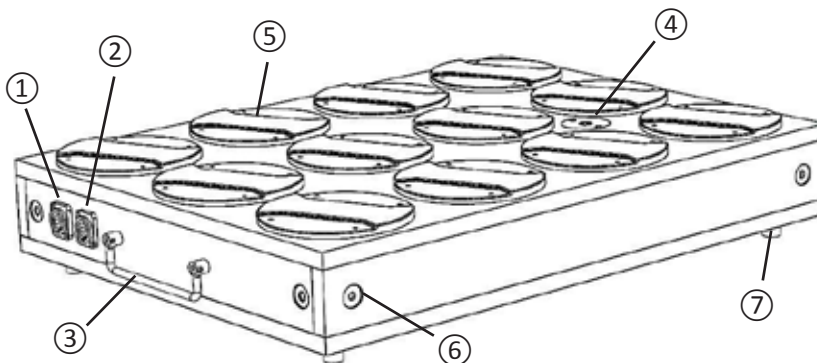
Plane Volume Source VSS15	
Nominal Impedance	6 $\Omega$
Rated Power	250 W (Continuous)
Peak Power	500 W (Short Duration: duty cycle 1/5, on time 10 s)
Frequency Response	100 Hz ~ 8,000 Hz (According to IEC 60268-5:2007)
Sound Power Level	123 dB (Pink) L <sub>w</sub> ≥ 100 dB @ 100 Hz ~ 6300 Hz (1/3 Octave)
Sound Pressure Level at 1 m	115 dB
Input Connector	SpeakON Audio Connector
Loudspeaker Units	Rubidium magnet loudspeaker, 4 inch, 8 $\Omega$ , 30 W
Reference Microphone	Pressure-field microphone MPA253, powered by ICCP supply, sensitivity 50mV/Pa, BNC output connector
Dimension (mm)	W600 x H115 x D450
Net Weight	9 kg (without package), 19.6 kg (with package)
Package Size (mm)	W848 x H247 x D578

## Plane Volume Source VSS15

### Typical Sound Pressure Level at 1 m with Pink Noise



### Flat and Module Design of VSS015



- ① SpeakON input connector; ② BNC output connector; ③ Handle; ④ Reference microphone;  
⑤ Loudspeaker; ⑥ Assembly threaded holes; ⑦ Rubber support; ⑧ Connection plate